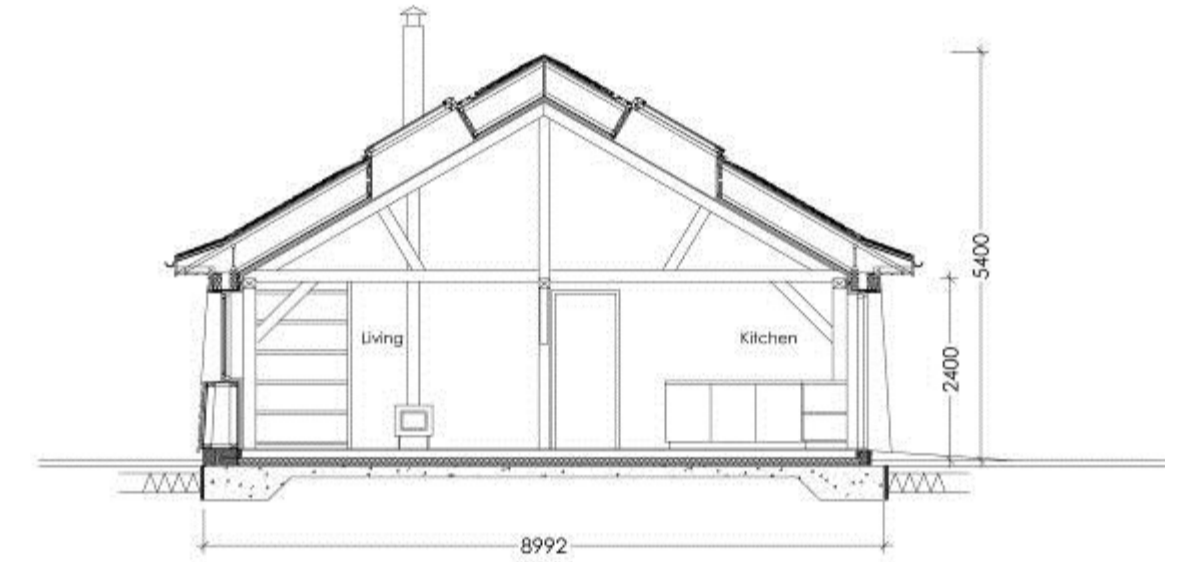
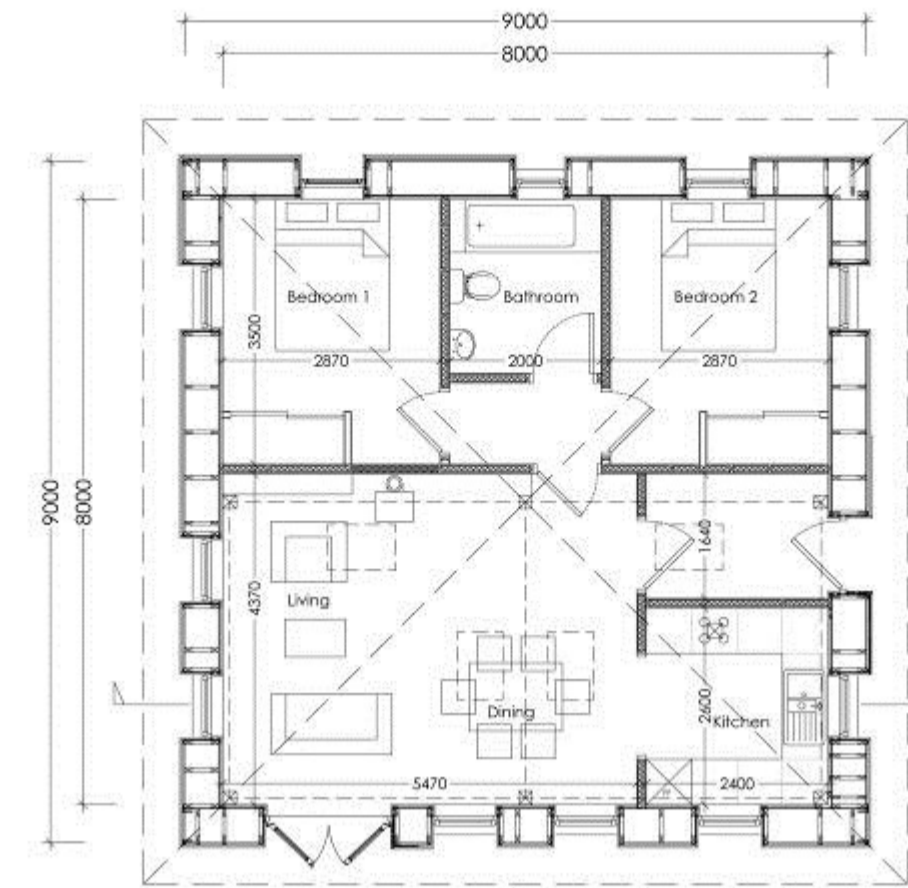




Roderick James Architects LLP



examples of our work



Specification as shown:

- External Walls tapered from 300 to 450mm, fully filled with Warmcel recycled newspapers (collected by local schoolchildren) 0.11 u-value.
- Home-grown Larch cladding ship-lapped, rough plaster finish internally.
- Timber framed, alu-clad double glazed windows.
- Wood burning stove, solar thermal panels, electric UFH with thermal slab as night storage heater running on off-peak electricity.
- Home grown Douglas Fir frame to main living space.

Concept:

Super-insulate to better than Passiv Haus standards, then meet the reduced energy demand with simple, cheap, low maintenance technology.



The Fair and Square House

Location : Achabeag, Ardtornish Estate, Lochaline
Morvern, near Fort William. PA80 5XU

www.achabeag.co.uk